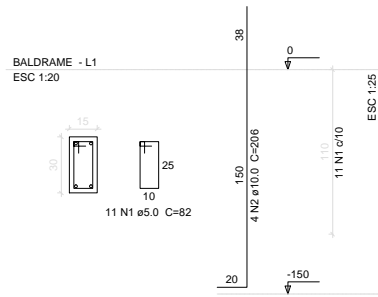
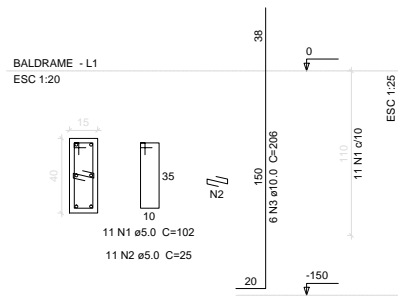


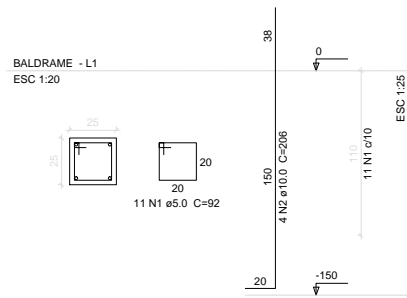
P1=P3=P4=P5=P6=P7=P8=P10=P13=P14=P15
=P16=P19=P20=P22=P24



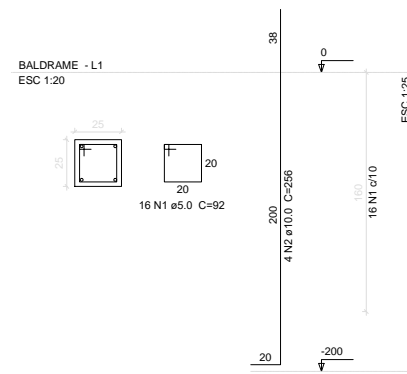
P12=P23



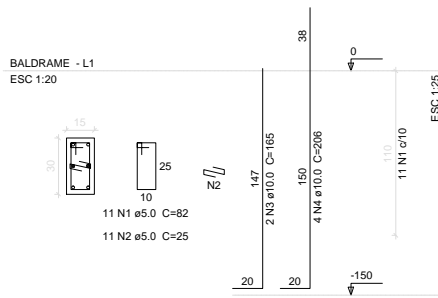
P2=P9=P17



P21



P11=P18



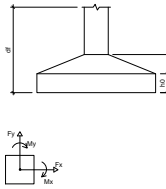
Relação do aço

ELEMENTO	AÇO	N	DIAM	Q	UNIT (cm)	C.TOTAL (cm)
16xP1	CA60	1	5.0	176	82	14432
	CA50	2	10.0	64	206	13184
3xP2	CA60	1	5.0	33	92	3036
	CA50	2	10.0	12	206	2472
2xP11	CA60	1	5.0	22	82	1804
	CA60	2	5.0	22	25	550
	CA50	3	10.0	4	165	660
	CA50	4	10.0	8	206	1648
2xP12	CA60	1	5.0	22	102	2244
	CA60	2	5.0	22	25	550
	CA50	3	10.0	12	206	2472
P21	CA60	1	5.0	16	92	1472
	CA50	2	10.0	4	256	1024

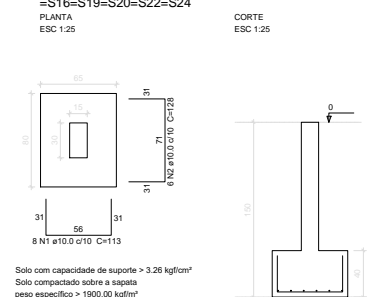
Resumo do aço

AÇO	DIAM	C.TOTAL (m)	PESO (kg)
CA50	10.0	214.6	132.3
CA60	5.0	240.9	37.1
PESO TOTAL			
CA50		132.3	
CA60		37.1	

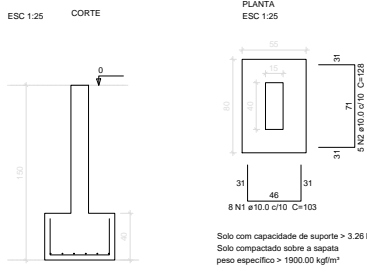
Vol. de concreto total (C-25) = 1.8 m³
Área de forma total = 34.1 m²



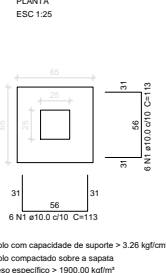
S1=S3=S4=S5=S6=S7=S8=S10=S13=S14=S15
=S16=S19=S20=S22=S24



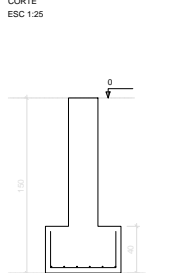
S12=S23



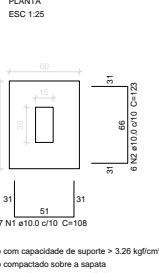
S2=S9=S17



S21



S11=S18



Relação do aço

ELEMENTO	AÇO	N	DIAM	Q	UNIT (cm)	C.TOTAL (cm)
2xS12	CA50	1	10.0	16	103	1648
	CA50	2	10.0	10	128	1280
3xS17	CA50	1	10.0	36	113	4068
2xS18	CA50	1	10.0	14	108	1512
16xS19	CA50	2	10.0	12	123	1476
	CA50	1	10.0	128	113	14464
	CA50	2	10.0	96	128	12288
S21	CA50	1	10.0	12	113	1366

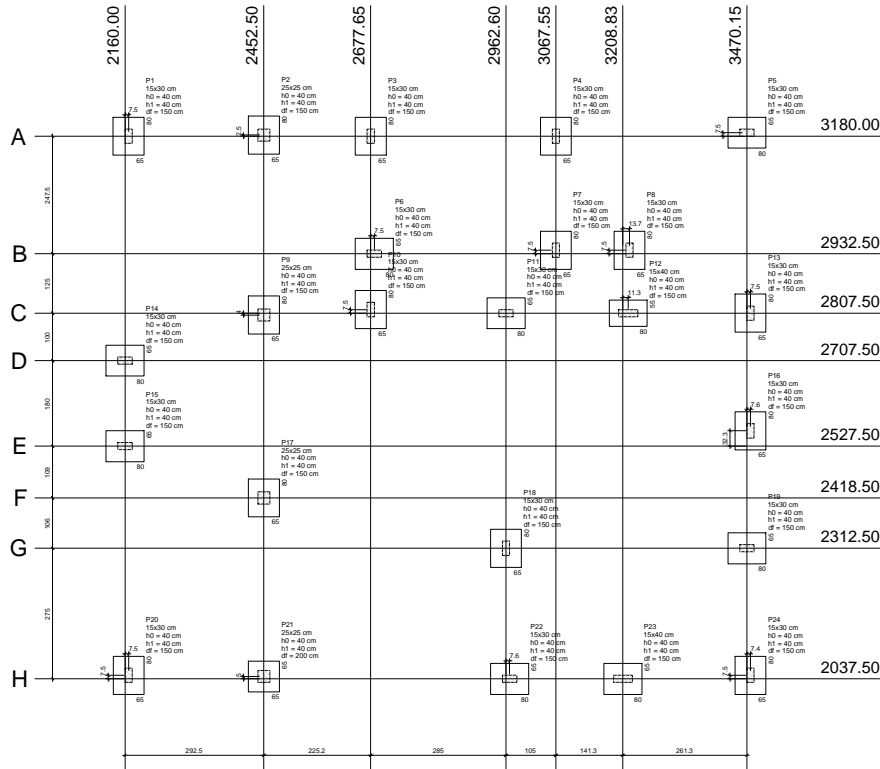
Resumo do aço

AÇO	DIAM	C.TOTAL (m)	PESO (kg)
CA50	10.0	381	234.9
PESO TOTAL			
CA50		234.9	

Vol. de concreto total (C-25) = 4.72 m³
Área de forma total = 27.04 m²

1 CORTES

ESC: 1/100



1 PLANTA DE LOCAÇÃO

ESC: 1/100



PREFEITURA MUNICIPAL DE
VÁRZEA GRANDE
amar • cuidar • acreditar

PREFEITURA MUNICIPAL DE VÁRZEA GRANDE

Av. Castelo Branco, Espaço Municipal, 2500 - Centro Sul, Várzea Grande/MT
CEP 78125-700 - Fone/Fax: 65 3688 8000

PROJETO:

CMEI NAIR SACRE

OBRA:

REFORMA E AMPLIAÇÃO

LOCALIZAÇÃO:

RUA Y, QUADRA 68 BAIRRO CRISTO REI- VG

ASSUNTO:

PROJETO ESTRUTURAL

UNIDADE:

METRO

AUTOR DO PROJETO:

AUREO EMANOEL DA SILVA
ENGENHEIRO CIVIL
CREA-MT 042435

ESCALA:

INDICADA

DATA:

JANEIRO/2020

FOLHA N°

ÁREA TOTAL TERRENO:
4.861,96m²
ÁREA CONST. EXISTENTE:
787,27m²
ÁREA DE AMPLIAÇÃO
118,85m²
ÁREA TOTAL
5.768,00m²

03/03